

BIRCHWOOD VILLAGE  
TOWN HOUSE

PROPOSED LENOX  
FAIRWAY LANDINGS

WOODS LANE  
CONDOMINIUMS

CRANWELL SPA &  
GOLF RESORT

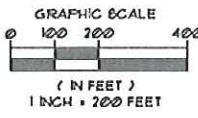
DUNMORE COURT  
GALWAY COURT

FAIRWYND DRIVE  
CONDOMINIUMS

FAIRWYND DRIVE  
CONDOMINIUMS

ROUTE 7 & 20

WALKER STREET



PRELIMINARY DEVELOPMENT PLAN  
PREPARED FOR:

STONE PATH DEVELOPMENT, INC.

LOCATED AT:  
241 WALKER STREET  
LENOX, MASSACHUSETTS

*Design Group, Inc.*  
Civil Engineers \* Surveyors \* Consultants  
# REGISTRATION # MASSACHUSETTS 04541 - 04545



PLAN REVISIONS  
AERIAL PLAN

SK DESIGN GROUP PROJECT #:  
160138

PRELIMINARY


JAMES M. SOLISE II  
SK DESIGN GROUP PRESIDENT  
LICENSE # 35083  
PROFESSIONAL OF RECORD  
PHONE: 413-443-3532

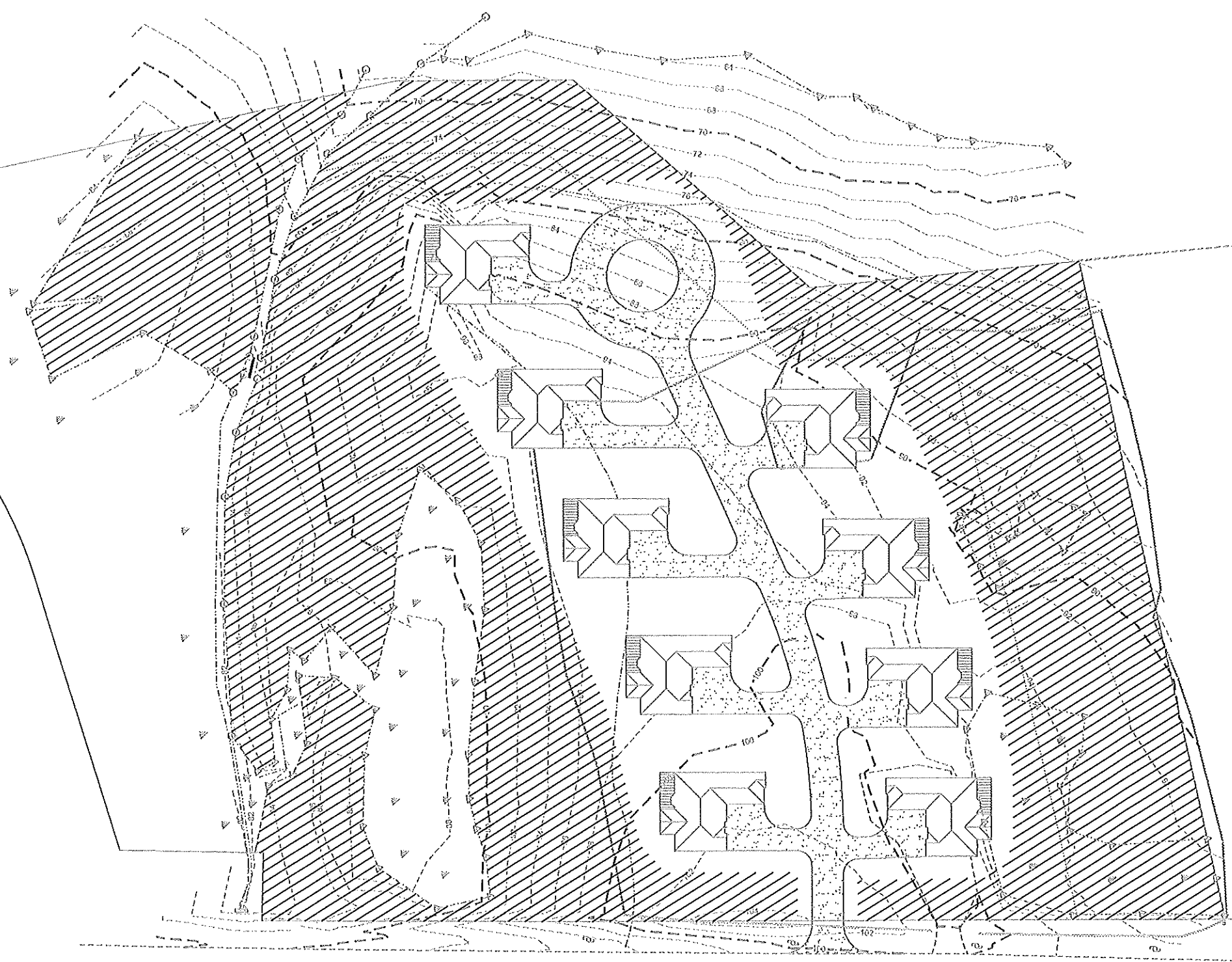
REVISION	

DRAWN BY: SMG	CHECKED BY: JMS II
DATE: AUGUST 17, 2017	SHEET NO. 1
ISSUED FOR: PLANNING	OF 1
SCALE: 1" = 200'	





 OPEN SPACE (4.28 ACRES±)



PRELIMINARY DEVELOPMENT PLAN  
PREPARED FOR:

STONE PATH DEVELOPMENT, INC.

LOCATED AT:  
241 WALKER STREET  
LENOX, MASSACHUSETTS



**Design Group, Inc.**  
Civil Engineers \* Surveyors \* Consultants  
1100 STATE STREET, SUITE 200, LENOX, MASSACHUSETTS 01946

PLAN REVISIONS  
**OPEN SPACE PLAN**

SK DESIGN GROUP PROJECT #  
**162138**

**PRELIMINARY**

JAMES H. SCHUEZ, II  
SK DESIGN GROUP PRESIDENT  
LICENSE #20683  
PROFESSIONAL RECORD  
PHONE: 413-443-8317

REVISIONS	

DRAWN BY: BSG	CHECKED BY: JVS II
DATE: AUGUST 17, 2017	SHEET NO. <b>1</b>
ISSUED FOR: PLANS-53	OF <b>1</b>
SCALE: 1" = 40'	